

New Hampshire Audubon
McLane Center
84 Silk Farm Road
Concord, NH 03301



McLane Center and Silk Farm Sanctuary

Comprehensive Environmental Education Guide



New Hampshire Audubon, a nonprofit statewide membership organization, is dedicated to the conservation of wildlife and habitat throughout the state. Independent of the National Audubon Society, NHA has offered programs in wildlife conservation, land protection, environmental policy, and environmental education since 1914.

The mission of New Hampshire Audubon is to protect New Hampshire's natural environment for wildlife and for people.

Comprehensive Environmental Education Guide

McLane Center's Education Department:

Welcome teachers, homeschoolers, scout groups, and other educators hoping to incorporate environmental education into your curricula. The following is a comprehensive environmental education teacher guide designed to help you decide what programs are right for your students. Our programs cover a variety of topics focusing on New Hampshire wildlife and ecosystems. Inside you will find descriptions of the many programs we offer and examples of how they correlate with NH Science Curriculum Frameworks.

Each program can be adapted to meet multiple education objectives. If you find that none of these programs meet your needs please contact our program director Kevin Wall to discuss how we can customize one for you. Our naturalists are well informed about the natural world and are excited to share their knowledge and enthusiasm with your students.

At NHA, we believe in creating hands-on, experiential learning opportunities that provide students and teachers with the opportunity to make stronger connections with their curriculums and the natural world.

Thank you for your interest in New Hampshire Audubon. Without your support, fulfilling our mission of *Protecting New Hampshire's Natural Environment for Wildlife and for People* would not be possible.

About the McLane Center and Silk Farm Sanctuary

The McLane Center is the oldest established education center for NHA. In addition to being the organizational headquarters, McLane is equipped to host a variety of education programs throughout the year. We offer programs for all ages and audiences including school vacation and summer camps, pre-school and homeschool classes, weekend family programs, adult lecture series, and scout group outings. The Center is also home to a number of exhibits including live owls, a red-tailed hawk, a bald eagle, turtles, frogs, and snakes.

Silk Farm Sanctuary consists of approximately 20 acres of woodland, field, and pond habitats. Several miles of hiking trails lead throughout the sanctuary making it easily accessible for visitors. It is home to numerous plant and animal species including deer, groundhogs, and the occasional bear! Come explore Silk Farm Sanctuary. You never know what you might discover.



Comprehensive Environmental Education Guide

New Hampshire Wildlife: Indoor/Large Group Programs

Pre-K & K Programs:

Available Year-Round Cost: \$125

Time: 45 minutes Group Size: 50

Birds for Beginners

Introduce children to the basic parts of a bird. See and touch wings, feathers, bones, and beaks. Interactive experiences and a live raptor keep young students engaged.

C. F. Codes: LS1-1, LS2-2, LS1-3, LS4-3



New Hampshire Wildlife

Students learn about the diverse animal groups found in New Hampshire through visits with a live snake, turtle, frog, bird, and mounted animals.

C.F. Codes: LS1-1, LS2-2, LS1-3, LS4-1, LS3-4

Attention teachers! Do you have ideas for programs you would like delivered to your students? If you don't see a program that addresses the objectives you seek to meet, please contact us and we can help customize a specific one to meet your needs. Our program director is licensed as a Highly Qualified Teacher for the state of NH and is available to help plan how NHA can fit into your curriculum. We also have experience working with private schools and homeschooled students. These programs can be adapted to meet a variety of educational needs.



Comprehensive Environmental Education Guide



New Hampshire Wildlife: Indoor/Large Group Programs, Continued

Grades 1-8 Programs:

Available Year Round Cost: \$195 (unless otherwise noted)

Time: 60 minutes Group Size: 75 students maximum

Wings of the Night: Owls and Bats

While both of these nocturnal animals rely heavily on their sense of hearing to survive, each has its own way of catching prey. A live owl, props, and a multimedia presentation help students learn how each creature is beneficial to the natural world.

C.F. Codes: ESS1-3, LS1-1, LS1-2, LS3-2, LS4-1, LS4-3

Raptor Rapture

Cost: \$225 (includes two live birds)

Get up-close and personal with NH's raptors. Look into an owl's eyes, check out the talons of the red-tailed hawk, and learn about the efficient hunting techniques of these birds of prey. Learn the basic biology and lifestyle of these great birds of prey.

C.F. Codes: ESS1, SPS1-2, SPS1-3, LS1-3, LS1-2

Scales and Skins: NH Reptiles and Amphibians

Compare the similarities and differences between reptiles and amphibians in this look at NH's scaly and slimy creatures. Live animals and props will demonstrate some amazing characteristics of these cold blooded creatures.

C.F. Codes: LS1-1, LS1-2, LS1-3, LS4-1



Attention teachers! NHA's programs are not just for science class. We have the skills and knowledge necessary to adapt programs to meet multiple disciplines including math, social studies, language arts, and geography. Contact our program director to find out how.



For more information contact Program Director Kevin Wall by calling 603-224-9909, ext. 342 or email kwall@nhaudubon.org.

Comprehensive Environmental Education Guide

New Hampshire Wildlife: Indoor/Large Group Programs, Continued

Avian Adventures: NH Birds

What makes birds different from other animals? Using mounted birds, feathers, wings, feet, beaks, nests, and eggs, students learn about bird habitat and basic bird biology. A live raptor steals the show at the conclusion of the program!

C.F. Codes: LS1-1, LS3-1, LS4-1, LS4-3

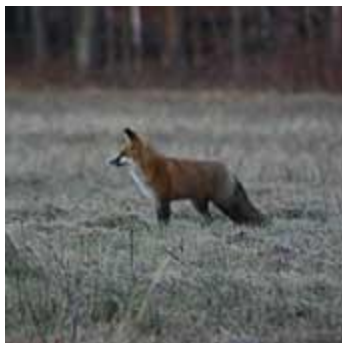


Moose to Mice

From beavers that swim to bats that fly, students will be amazed at the diversity of NH's 60 mammal species.

Mounts, pelts, skulls, and scat will illustrate how mammals survive as predators and prey, live in different habitats, and protect themselves with special adaptations.

C.F. Codes: LS1-1, LS1-2, LS2-1, LS2-2, LS4-1



Wild New Hampshire Outdoor Field Trips

Discovery Walks

These programs focus on various environmental concepts through hands-on, outdoor exploration. They are designed to be conducted in an outdoor setting and are geared to specific age ranges.

Programs can be held here at the McLane Center in our Silk Farm

Sanctuary or your local natural area (travel fees will apply). Students and teachers should prepare for the weather and environmental factors by wearing appropriate footwear, clothing, bug repellants, and sunscreen. One adult chaperone is required per six students.

Group Size: 25 students maximum

Cost and Age Range:

Grades PreK-1: \$95 for 60 minutes

Grades 2-6: \$125 for 1.5 hours

Grades 7-8: \$160 for 2.5 hours

Attention homeschoolers! Do you have a group of regularly meeting students? NHA can customize a program for you. Find out how by calling 603-224-9909, ext. 342 or for a list of regularly scheduled homeschool programs visit www.nhaudubon.org.



Comprehensive Environmental Education Guide

Wild New Hampshire Outdoor Field Trips, continued

Animal Habitats (year-round)

All animals need food, water, shelter, and space to survive. Learn how habitats provide these basic needs. Your students will explore different habitats, look for signs of animals, and discover how changes in habitats impact wildlife.

C.F. Codes: ESS4-4, LS1-1, LS2-1, LS2-2, LS2-3, LS4-3

Autumn Adventures (September-November)

As nature prepares to slow down for the coming months, your students will discover the many adaptations plants and animals make to survive the winter. They will migrate like birds, gather food as squirrels would, and examine brightly colored leaves to in an effort to learn how plants prepare for the cold. This walk will encourage critical thinking and creativity.

C.F. Codes: ESS2-1, LS4-1

Signs of Spring (April-May)

Frogs are singing, buds are bursting, flowers are blooming, and birds are busy building nests for their young. Your students will discover the magic of spring and see how nature gets ready for a busy summer.

C.F. Codes: ESS2-1, LS1-3, LS2-3



Wildlife Surveys

These programs offer students the opportunity to become field biologist as they learn about NH wildlife. Students will use survey methods similar to those used by Audubon biologist to monitor wildlife populations. Learn what the surveys can teach us in regard to ecosystem health.

Birds Around Us (year-round)

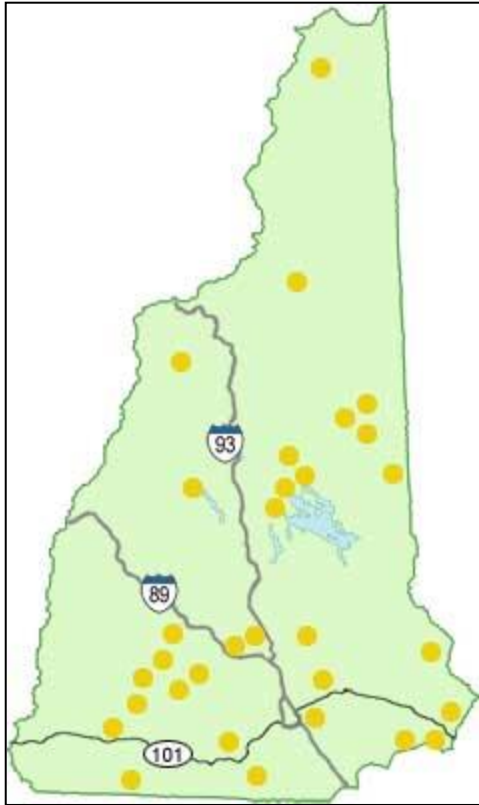
It's a bird! It's a plane! No, it's a group of curious students on a bird watching program.

We'll travel into forest and field with binoculars, field guides, and alert senses to discover common birds of the area. Students are introduced to bird-identification techniques and the basic biology and behavior of avian species.

C.F. Codes: SPS1-1, SPS4-2, ESS1-1, LS1-1, LS1-2, LS1-3, LS2-1, LS4-1, LS5-1



Comprehensive Environmental Education Guide



NHA Wildlife Sanctuaries

Attention educators! Our discovery walks and wildlife surveys can take place at the location of your choice. Options include your school, Silk Farm Sanctuary here in Concord, or choose from our list of wildlife sanctuaries scattered around the state each representing multiple ecosystems and providing opportunities for discovery. To learn more about NHA sanctuaries, visit www.nhaudubon.org.

Wild New Hampshire Outdoor Field Trips, continued

Insect Investigations (fall and spring)

Your students will delight in discovering the insects living in our center's habitats. Students will learn what makes an insect an insect and the important role they play our ecosystem. Using nets and bug boxes, we will venture out to capture different insects for close viewing.

C.F. Codes: SPS1-1, LS1-1, 2, 3; LS2-1

Measuring Nature (year-round)

During this program students will put their math skills to work while learning how biologist use math to measure nature. Students will construct transect plots and inventory the contents based on abundance, height, and size. Learn how to calculate the height of a tree and measure its circumference or set up a weather station and learn how to record temperature, wind-speed, and wind direction.

C.F. Codes: LS5-2, PS4-2, SPS1-1

Pond Probe (fall and spring)

Whirligigs, damselflies, boatmen, and more live in New Hampshire ponds and wetlands. Take an excursion into a wet world and do a survey of insects, reptiles, amphibians, fish, and birds. What makes a wetland important? How can the information we gain during our survey be an indicator of ecosystem health? We answer these questions and more during this highly interactive program.

C.F. Codes: SPS1-1, LS1-1, 2, 3; LS2-1



Comprehensive Environmental Education Guide

Wild New Hampshire Outdoor Field Trips, continued

Slimy and Scaly: Herpetology (April-June)

The program is similar to the pond probe in scope but focuses on a different ecosystem where we might discover life that belongs in this class of animals. Learn which reptiles and amphibians live in the forest and field and then test your skills in locating them.

C.F. Codes: SPSI-1, LS1-1, 2, 3; LS2-1

Tracking Wildlife in Winter (December-March)

Footprints in the snow tell stories about the secretive lives of wild animals. Your class will learn to identify common NH mammal tracks and patterns through games, activities, visual aids, and real tracks and signs.

C.F. Codes: ESS1-1, -7; ESS2-1; LS4-1; PSI-2

Attention scouts! Do you have an area of interest or a particular badge you are working on? Contact us about customizing a program for you. Our knowledgeable staff can work with you to design a program to help to help you accomplish your goals. Contact us to find out how.

Planning your program

- Pre-registration is required.
- Choose a program appropriate for your students' ages, abilities, and curriculum needs.
- Please have a few dates and times in mind when calling to schedule your program.
- If we travel to you, a travel fee of \$.90/mile, round-trip from Concord, will be charged to cover the cost of expense and staff travel time.
- Questions about registration? Call 603-224-9909, ext. 333 or shall@nhaudubon.org

Our Location

We are located just off Interstate 89 at exit 2. Follow signs to:

84 Silk Farm Rd.
Concord, NH 03301
www.nhaudubon.org

