

## Play a vital role in helping pollinators.

Make your land, however small or large, safe for pollinators through a few simple actions:

- ◆ Choose a variety of locally grown, pesticide free native plants.
- ◆ Select a mixture of flower colors, shapes, and bloom times.
- ◆ Try to provide blooming plants from early spring to late fall.
- ◆ Place plants in groups to help pollinators find food using less energy.
- ◆ Provide clean water with a pond, birdbath, or a pebble-lined dish.
- ◆ Leave flower seed heads and leaves on plants until the spring.
- ◆ Eliminate pesticides from your gardens.

*"Think of native plants as bird [and pollinator] feeders not just as decorative items."*

*-Doug Tallamy  
Bringing Nature Home*

Visit these sites for more information:

**UNH Cooperative Extension**  
[extension.unh.edu/resource/pollinator-plants-northern-new-england-gardens-fact-sheet](http://extension.unh.edu/resource/pollinator-plants-northern-new-england-gardens-fact-sheet)

**Pollinator Partnership**  
[www.pollinator.org](http://www.pollinator.org)

**Xerces Society**  
[www.xerces.org](http://www.xerces.org)

*Illustration by Lois De Luca:  
Long Dash Skipper and  
Eastern Tailed Blue on clover.*

This garden is made possible with generous support from:

U.S. Fish and Wildlife Service,  
New England Field Office

Robin Colson Memorial Foundation

Gertrude Couch Trust

Benjamin Couch Trust

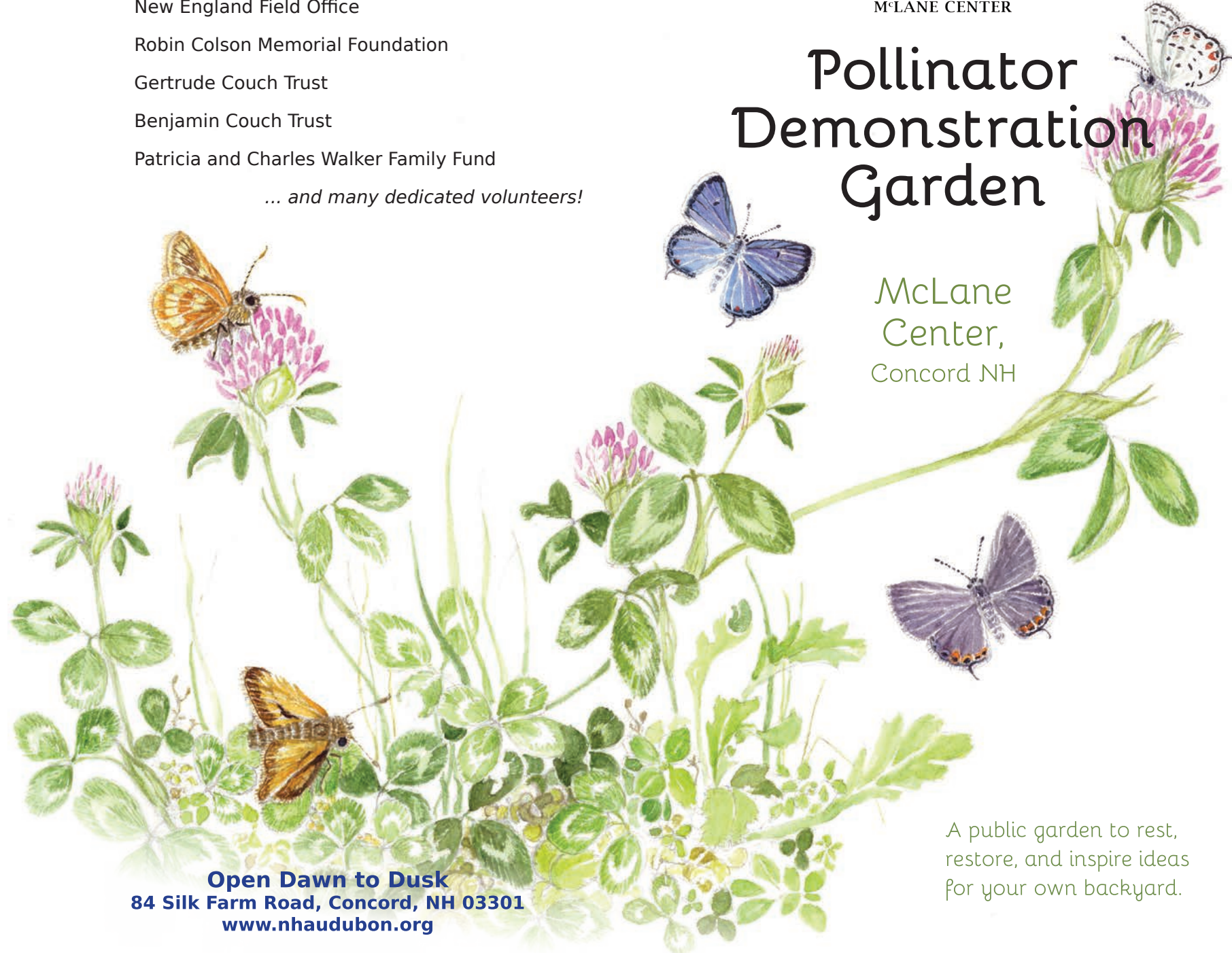
Patricia and Charles Walker Family Fund

*... and many dedicated volunteers!*



# Pollinator Demonstration Garden

McLane  
Center,  
Concord NH

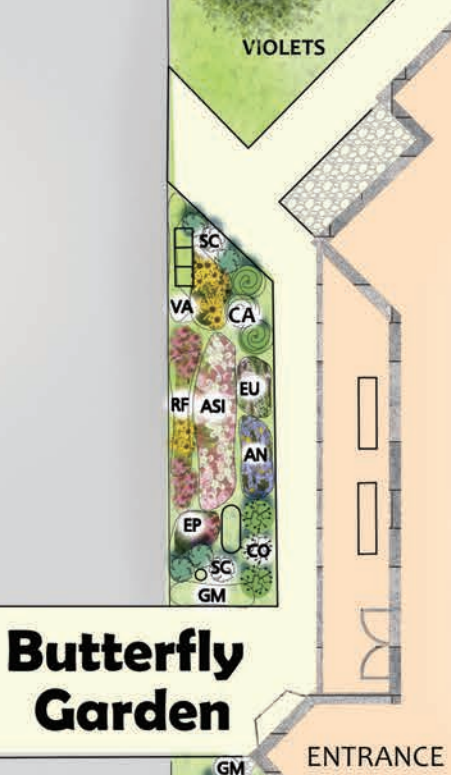


**Open Dawn to Dusk**  
**84 Silk Farm Road, Concord, NH 03301**  
[www.nhaudubon.org](http://www.nhaudubon.org)

A public garden to rest,  
restore, and inspire ideas  
for your own backyard.



Butterfly Garden



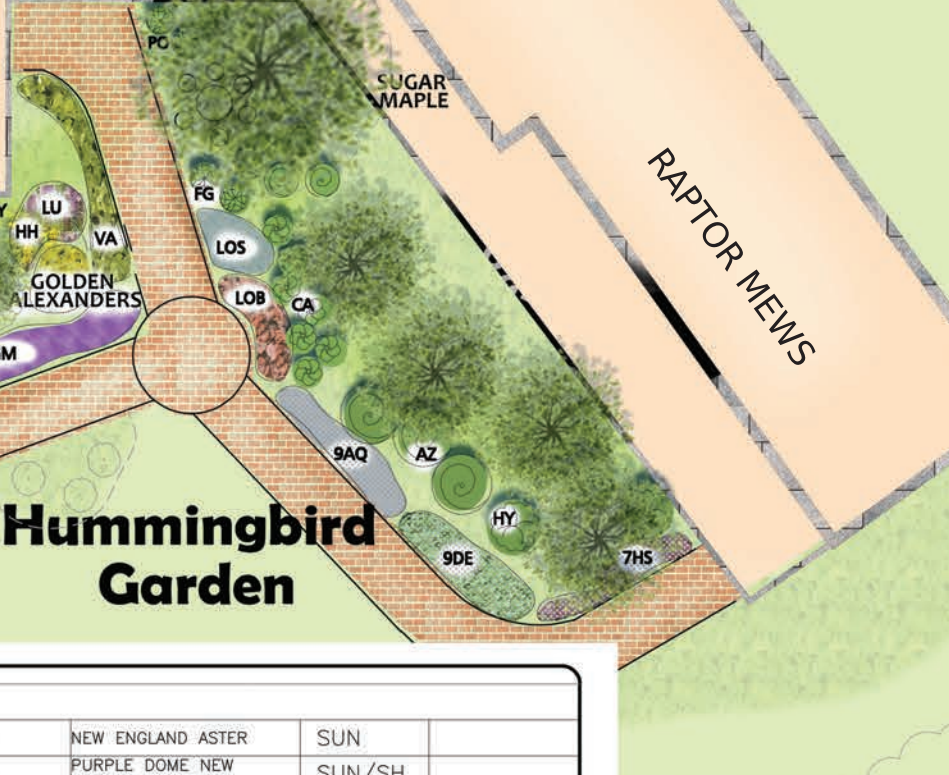
Circle the plants you like and share with your local nursery.

McLANE AUDUBON CENTER

Mixed Pollinator Garden



Hummingbird Garden



POLLINATOR PLANTING PALETTE				
KEY	BOTANICAL NAME	COMMON NAME	SUN/SH	COMMENTS
SHRUBS				
AZ	AZALEA VISCOSUM	SWAMP AZALEA	SUN/SH	
CNJ	CEANOTHUS AMERICANUS	NEW JERSEY TEA	SUN/SH	
CO	CEPHALANTHUS OCCIDENTALIS 'SUGAR SHACK'	SUGAR SHACK BUTTON BUSH	SUN	
CA	CLETHRA ALNIFOLIA 'HUMMINGBIRD'	HUMMINGBIRD SUMMERSWEET	SUN/SH	
FG	FOTHERGILLA GARDENII	DWARF FOTHEREGILLA	SUN/SH	
HY	HYDRANGEA ARBORESCENS ANNABELLE	ANNABELLE HYDRANGEA	SH	
LO	LONICERA SEMPERVIRENS 'JOHN CLAYTON'	YELLOW TRUMPET HONEYSUCKLE VINE	SUN	
PO	PHYSOCARPUS OPULIFOLIUS	NINEBARK 'NANA'	SUN/SH	
SD	SALIX DISCOLOR	PUSSY WILLOW	SUN	
SP	SYRINGA PATULA 'MISS KIM'	MISS KIM LILAC	SUN	
VA	VACCINIUM ANGUSTIFOLIUM	LOW BUSH BLUEBERRY	SUN	

PERENNIALS/GRASSES				
AN	ASTER NOVAE ANGLIAE	NEW ENGLAND ASTER	SUN	
AND	ASTER NOVAE ANGLIAE 'PURPLE DOME'	PURPLE DOME NEW ENGLAND ASTER	SUN/SH	
AF	AGASTACHE FOENICULUM 'BLUE FORTUNE'	ANISE HYSSOP 'BLUE FORTUNE'	SUN/SH	
AQ	AQUILEGIA CANADENSIS	RED COLUMBINE	SH	
AU	ARCHTOSTAPHYLOS UVA-URSI	BEARBERRY	SUN	
ASI	ASCLEPIAS INCARNATA	SWAMP MILKWEED	SUN	
AT	ASCLEPIAS TUBEROSA	BUTTERFLYWEED	SUN	
CP	COREOPSIS 'ZAGREB'	ZAGREB CORESOPSIS	SUN	
DE	DICENTRA EXIMIA	FRINGED BLEEDING HEART	SH	
EP	ECHINACEA PURPUREA	CONEFLOWER	SUN/SH	
EU	EUPATORIUM 'LITTLE JOE'	JOE PYE WEED	SUN/SH	
GM	GERANIUM MACULATUM	SPOTTED CRANESBILL	SUN/SH	
HH	HELIOPSIS HELIANTHOIDES	OXEYE SUNFLOWER	SUN	
HS	HEUCHERA AMERICANA	CORAL BELLS	SH	
LS	LIATRIS SPICATA 'KOBOLD'	GAYFEATHER	SUN	
LOB	LOBELIA CARDINALIS 'FIED GREEN TOMATOES'	CARDINAL FLOWER	SUN/SH	
LOS	LOBELIA SIPHILITICA	BLUE CARDINAL FLOWER	SUN/SH	
LU	LUPINUS PERRENNIS	LUPINE - WILD BLUE	SUN/SH	
MD	MONARDA DIDYMA 'JACOB KLINE'	BEE BALM	SUN/SH	
MF	MONARDA FISTULOSA	WILD BERGAMOT	SUN/SH	
PS	PHLOX SUBULATA	MOSS PHLOX	SUN	
RF	RUDBECKIA FULGIDA	ORANGE CONEFLOWER	SUN	
SC	SCHIZACHYRIUM SCOPARIUM 'THE BLUES'	THE BLUES LITTLE BLUESTEM GRASS	SUN	

LANDSCAPE ARCHITECTURE BY: ALLEN & MAJOR ASSOCIATES  
INSTALLATION AND STONWORK BY: OLKONEN EARTHSCAPES

